



City of Laguna Hills Parks & Recreation Commission

Chris Bieber
Chair

Marc Trocchio
Vice Chair

Sanjay Mathur
Commissioner

Patricia Thee
Commissioner

Michael Zozaya
Commissioner

Special Meeting Agenda
Wednesday, September 18, 2024 - 6:00 PM

Heritage Room
25555 Alicia Pkwy
Laguna Hills, CA 92653

Any person wishing to address the Parks and Recreation Commission only on items listed on this Agenda, is asked to complete a pink "Request to Speak" form available on the table at the back of the Chamber. The completed form is to be submitted to the Recording Secretary prior to an individual being heard by the Commission. Completion of the form is voluntary. All persons may attend the meeting regardless of whether this form is completed. Members of the public wishing to address the Parks and Recreation Commissioner can do so only on items listed on this Special Meeting Agenda during the Public Comments portion of the Agenda with a time limitation of three minutes per person, an overall time limit of twelve minutes for any one subject, and a total time limit of thirty minutes for Public Comments.

Members of the public may address the Parks and Recreation Commission only on items listed on the Special Meeting Agenda. Public comments are limited to three minutes per person, an overall time limit of twelve minutes for any one subject, and a total time limit of thirty minutes.

Call to Order

Resolution No. 96-04-09-1 established rules of decorum for public meetings held by the City of Laguna Hills. Resolution No. 96-04-09-1 is available on the table at the back of the City Council Chamber.

Roll Call of Commissioner Members

1. Public Comments

This is the time to address the Parks and Recreation Commission on any matter not listed on this Agenda that is within the subject matter jurisdiction of the Commission. Public Comments are limited to three minutes per person, an overall time limit of twelve minutes for any one subject, and a total time limit of thirty minutes. Clarification questions from the Commission will not count against time limits. Speaker's responses are limited to one minute.

2. Presentations

2.1 Summaries of Community Outreach Work Efforts for Park Improvements at El Conejo and MacKenzie Parks.

Recommendation: That the Parks and Recreation Commission receive a presentation from David Volz Design Landscape Architects, Inc. on the community outreach results for these parks.

Adjournment

The next Regular Meeting of the Parks & Recreation Commission will be October 2, 2024, at 7:00 p.m. in the City Council Chamber, located at 24035 El Toro Road, Laguna Hills, California .

CERTIFICATION

I, DAVID T. REYNOLDS, Deputy City Manager of the City of Laguna Hills, do hereby certify that a copy of the foregoing Agenda was posted at Laguna Hills City Hall, Laguna Hills Community Center, and the Courtyard at La Paz Center by September 13, at 5:00 p.m..



David T. Reynolds, Deputy City Manager

In compliance with the Americans with Disabilities Act, if you need special assistance to participate in this meeting, you should contact the office of the Deputy City Manager at (949) 707-2680. Notification 48 hours prior to the meeting will enable the City to make

reasonable arrangements to assure access.

Materials related to an item on this Agenda submitted to the Commission after distribution of the Agenda packet are available for public inspection in the Community Center at 25555 Alicia Parkway, Laguna Hills, California, during normal business hours.



City of Laguna Hills Parks & Recreation Commission Staff Report

Date: September 18, 2024
To: Parks and Recreation Commission
From: David Reynolds, Deputy City Manager
Issue: Summaries of Community Outreach Work Efforts for Park Improvements at El Conejo and MacKenzie Parks.

Recommendation: That the Parks and Recreation Commission receive a presentation from David Volz Design Landscape Architects, Inc. on the community outreach results for these parks.

Background:

On May 14, 2024, the City Council awarded Professional Services Agreement to David Volz Design Landscape Architects, Inc. (DVD) for landscape architectural design services for El Conejo and MacKenzie parks. One of the goals of this agreement is for DVD to develop conceptual designs of park improvements at these two parks. An essential and first step in this process is for DVD to conduct public outreach for improvements at these parks as well as to compile an inventory of existing park amenities.

DVD held two public workshops at each park as illustrated in the table below to elicit public input for potential park improvements. Additionally, DVD conducted surveys for residents to provide comments and suggestions on park improvements.

Park	Workshop Date
El Conejo	Wednesday, July 31 from 6pm to 8pm
	Saturday, August 10 from 10am to 11:30am

MacKenzie	Thursday, August 1 from 6pm to 8pm
	Saturday, August 10 from 1pm to 2:30pm

The purpose of the September 18, 2024, Parks and Recreation Commission workshop meeting is for DVD to provide the results of the public outreach work efforts and park inventories for El Conejo and MacKenzie parks. DVD’s community outreach summaries, attached to this staff report, include the following information for each park:

- Outreach Summary
- Surrounding Uses and Connections
- Site Inventory Plan
- Opportunities and Constraints

This meeting provides the opportunity for the Parks and Recreation Commission to provide feedback on these summaries before this information is presented to the City Council. It also provides another opportunity for the public to provide additional input on park improvements at these parks.

Fiscal Impact:

The Professional Services Agreement with David Volz Design Landscape Architects, Inc., for Landscape Architectural Design Services for El Conejo Park and Mackenzie Park Rehabilitation Projects includes a total Maximum Contract Amount of \$173,700.

Attachments:

1. Attachment 1 - El Conejo Outreach Summary
2. Attachment 2 - MacKenzie Outreach Summary

Attachment 1

El Conejo Park Community Outreach Summary





CITY OF LAGUNA HILLS – EL CONEJO PARK

COMMUNITY OUTREACH SUMMARY

SUMMARY OF COMMUNITY OUTREACHES FOR EL CONEJO PARK

TWO COMMUNITY OUTREACHES WERE HELD ON SITE 7/31 AND 8/10 TO ENGAGE AND GATHER FEEDBACK FROM THE COMMUNITY AS TO THE DIRECTION OF THE PARK REDESIGN EFFORT.

BOTH OUTREACHES WERE WELL ATTENDED WITH GOOD FEEDBACK TO THE DIRECT QUESTIONS OF:

-WHAT PLAYGROUND THEME WOULD YOU LIKE TO SEE?

-WHAT PLAYGROUND COMPONENT IS MOST IMPORTANT FOR YOU TO HAVE AT THE PARK?

IN ADDITION, OPEN ENDED FEEDBACK WAS REQUESTED FROM THE COMMUNITY TO HEAR ABOUT OTHER DESIRES AND IMPROVEMENTS THAT COULD BE MADE THROUGHOUT THE PARK. A ONLINE SURVEY WITH THESE SAME QUESTIONS AND OPEN ENDED FEEDBACK WAS ALSO ACTIVE FROM 7/30 THROUGH 8/18, GATHERING GOOD FEEDBACK FROM COMMUNITY MEMBERS WHO WERE NOT ABLE TO ATTEND IN PERSON.

BELOW ARE THE RESULTS OF THE 'DOTMOCRACY EXERCISE' FOR BOTH OF THE QUESTIONS. TREEHOUSE THEME WAS THE MOST POPULAR THEME WITH 51 VOTES. FOLLOWED CLOSELY BY FORT THEME WITH 35 VOTES. LARGE PLAY STRUCTURE WAS THE MOST POPULAR ELEMENT WITH 48 VOTES. FOLLOWED BY PLAYGROUND SHADE WITH 27 VOTES

WHAT PLAYGROUND THEME WOULD YOU LIKE TO SEE?				
	OUTREACH #1	OUTREACH #2	ONLINE	TOTAL
FORT THEME	27	2	6	35
BUTTERFLY THEME	1	3	1	5
CATTLE RANCH THEME	5	2	1	8
TREE HOUSE THEME	29	13	9	51
LAGOON THEME	1	2	2	3

WHAT PLAYGROUND COMPONENT IS MOST IMPORTANT FOR YOU TO HAVE AT THE PARK?				
	OUTREACH #1	OUTREACH #2	ONLINE	TOTAL
CLIMBERS	2	0	3	5
SWINGS	10	3	3	16
LARGE PLAY STRUCTURES	28	11	9	48
CRITTERS/SPINNERS	2	0	0	2
PLAYGROUND SHADE	16	7	4	27

SUMMARY OF OPEN ENDED FEEDBACK

BELOW ARE THE MOST REPEATED AND RELEVANT FEEDBACK FOR OTHER IDEAS/IMPROVEMENT/GENERAL PARK COMMENTS WE RECEIVED, BOTH IN PERSON AND ONLINE. SOME FEEDBACK WAS OMITTED AS IT WAS NOT PARK RELATED, AND WILL BE GIVEN IN A SEPARATE DOCUMENT.




- ADD SHADE THROUGHOUT PARK, OVER WALKWAYS, SEATING AREAS
- SHADE OVER PLAYGROUND
- MORE SEATING NEW PLAYGROUND
- MORE BBQ'S WITH SEATING AREA
- SPLASH PAD, ISN'T ONE NEARBY
- IMPROVE SIGHT-LIGHTS INTO PLAYGROUND AREA
- ADD BATHROOMS
- NO BATHROOMS
- PUMP TRACK FOR BIKES, FOR BIG AND LITTLE KIDS
- MORE LIGHTING, ESPECIALLY BY THE PATHS ITS TO DARK NOW AND DANGEROUS
- MORE OWL BOXES
- ROLLER HOCKEY/LACROSSE RINK/SKATE PARK. LAWN FOR SOCCER
- LESS SAND AT PLAYGROUND
- WORKING WATER FOUNTAIN WITH DOG BOWL
- KEEP BASKETBALL COURT, UPDATE BASKET AND BACKBOARD
- KEEP LOOP SIDEWALK, WIDEN TO ALLOW FOR PASSING PARTIES TO EASILY PASS
- DOG RUNS
- IMPROVE LANDSCAPE, IRRIGATION SPRAYS AND WASTES A LOT OF WATER, SIDEWALKS WET
- REMOVE CONCRETE CREEK, ATTRACTS MOSQUITOES AS IT DOESN'T DRAIN
- FIX BROKEN CONCRETE
- NO MONKEY BARS
- KEEP NEW PLAYGROUND EQUIPMENT IN SHAPE, DO NOT LET GO INTO DISREPAIR
- WORK OUT STOPS ALONG PATH (HYDRAULIC)
- SOCIAL AREA, PARK IS USED A LOT FOR COMMUNITY GATHERINGS
- UMBRELLAS OR SHADE OVER SEATING
- PLAYGROUND NEEDS TO ACCOMODATE MULTIPLE AGES (2-12)

TO SUMMARIZE THESE COMMENTS AND THE VERBAL COMMENTS WE RECEIVED:

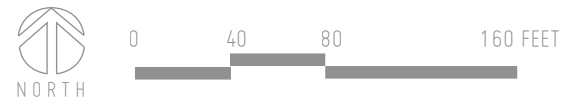
- BATHROOMS ARE A VERY DIVISIVE SUBJECT, PEOPLE ARE VERY STRONG FOR OR AGAINST, SLIGHTLY MORE ARE IN FAVOR
- SHADE OVER PLAYGROUND AND THROUGHOUT PARK IS DESIRED, VIA TREES OR STRUCTURES
- MORE SEATING AROUND THE PATH AND AT THE PLAYGROUND
- LIGHTING IMPROVEMENTS, THE PARK IS DARK AND PEOPLE ARE DO NOT FEEL SAFE TO WALK AT NIGHT
- A HANDFUL OF COMMENTS WANTING A SPLASH PAD
- KEEP LOOP PATH, USED AS WALK PATH, FITNESS EQUIPMENT WOULD BE NICE



LEGEND

-  PEDESTRIAN CONNECTION TO EXISTING ADJACENT NEIGHBORHOOD
-  PEDESTRIAN CONNECTION TO EXISTING HIKING/BIKING TRAIL
-  EXISTING ON STREET PARKING

CITY OF LAGUNA HILLS - EL CONEJO PARK
 Surrounding Uses and Connections



LEGEND

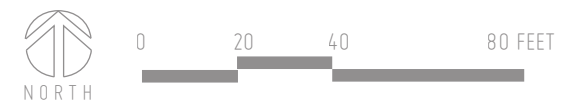
- EXISTING PARK TABLE AND SEATING
- EXISTING PARK BENCH
- EXISTING DRINKING FOUNTAIN
- EXISTING PRIMARY UTILITIES
- EXISTING TREES
- EXISTING RETAINING WALLS
- EXISTING DRAINAGE CHANNEL
- EXISTING STORAGE BUILDING

LEGEND

- EXISTING WALKWAY
- EXISTING PLAYGROUND AREA
- EXISTING BASKETBALL COURT
- EXISTING PARK MONUMENT SIGN
- EXISTING LIGHT POLE

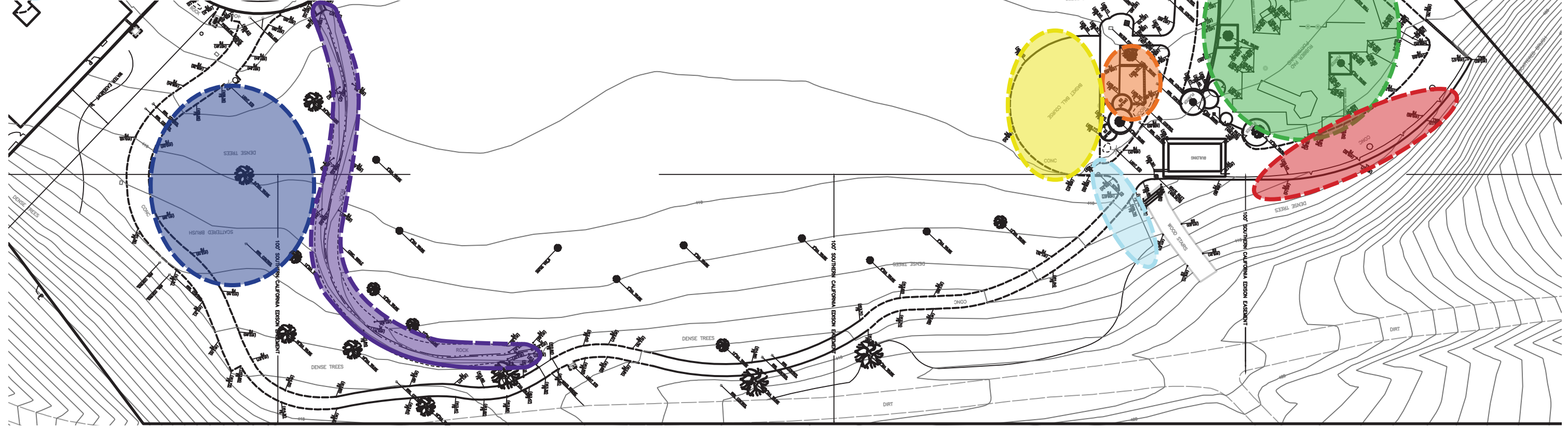


CITY OF LAGUNA HILLS - EL CONEJO PARK
Site Inventory Plan

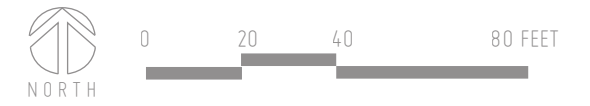


LEGEND

-  EXISTING PLAYGROUND USE ZONE
-  EXISTING PARK PICNIC ZONE
-  EXISTING PARK PICNIC EXPANSION ZONE
-  EXISTING BASKETBALL COURT RESURFACING
-  EXISTING PARK MONUMENT ZONE
-  EXISTING PARK PAVING ADA COMPLIANCE RENOVATION
-  POTENTIAL ADDITIONAL PICNIC SEATING AREA
-  POTENTIAL NATURAL CREEK RENOVATION DUE TO POOR DRAINAGE AND MOSQUITO ISSUE
-  EXISTING DRAINAGE ISSUE ONTO BASKETBALL COURT



CITY OF LAGUNA HILLS - EL CONEJO PARK
 Opportunities and Constraints



Attachment 2

Mackenzie Park Community Outreach Summary





CITY OF LAGUNA HILLS – MACKENZIE PARK

COMMUNITY OUTREACH SUMMARY

SUMMARY OF COMMUNITY OUTREACHES FOR MACKENZIE PARK

TWO COMMUNITY OUTREACHES WERE HELD ON SITE 8/1 AND 8/10 TO ENGAGE AND GATHER FEEDBACK FROM THE COMMUNITY AS TO THE DIRECTION OF THE PARK REDESIGN EFFORT.

BOTH OUTREACHES WERE WELL ATTENDED WITH GOOD FEEDBACK TO THE DIRECT QUESTIONS OF:

-WHAT PLAYGROUND THEME WOULD YOU LIKE TO SEE?

-WHAT PLAYGROUND COMPONENT IS MOST IMPORTANT FOR YOU TO HAVE AT THE PARK?

IN ADDITION, OPEN ENDED FEEDBACK WAS REQUESTED FROM THE COMMUNITY TO HEAR ABOUT OTHER DESIRES AND IMPROVEMENTS THAT COULD BE MADE THROUGHOUT THE PARK. A ONLINE SURVEY WITH THESE SAME QUESTIONS AND OPEN ENDED FEEDBACK WAS ALSO ACTIVE FROM 7/30 THROUGH 8/18, GATHERING GOOD FEEDBACK FROM COMMUNITY MEMBERS WHO WERE NOT ABLE TO ATTEND IN PERSON.

BELOW ARE THE RESULTS OF THE 'DOTMOCRACY EXERCISE' FOR BOTH OF THE QUESTIONS. FARM THEME WAS THE MOST POPULAR THEME WITH 27 VOTES. FOLLOWED CLOSELY BY HORSE RANCH THEME WITH 19 VOTES. LARGE PLAY STRUCTURE WAS THE MOST POPULAR ELEMENT WITH 39 VOTES. FOLLOWED BY PLAYGROUND SHADE WITH 33 VOTES

WHAT PLAYGROUND THEME WOULD YOU LIKE TO SEE?				
	OUTREACH #1	OUTREACH #2	ONLINE	TOTAL
FARM THEME	15	3	9	27
DRAGONFLY THEME	5	0	5	10
HORSE RANCH THEME	10	4	5	19
DINOSAUR THEME	9	2	2	13
FROG THEME	5	0	3	8

WHAT PLAYGROUND COMPONENT IS MOST IMPORTANT FOR YOU TO HAVE AT THE PARK?				
	OUTREACH #1	OUTREACH #2	ONLINE	TOTAL
CLIMBERS	5	1	2	8
SWINGS	12	2	4	18
LARGE PLAY STRUCTURES	26	5	8	39
CRITTERS/SPINNERS	0	0	0	0
PLAYGROUND SHADE	15	8	10	33

SUMMARY OF OPEN ENDED FEEDBACK

BELOW ARE THE MOST REPEATED AND RELEVANT FEEDBACK FOR OTHER IDEAS/IMPROVEMENT/GENERAL PARK COMMENTS WE RECEIVED, BOTH IN PERSON AND ONLINE. SOME FEEDBACK WAS OMITTED AS IT WAS NOT PARK RELATED, AND WILL BE GIVEN IN A SEPARATE DOCUMENT.

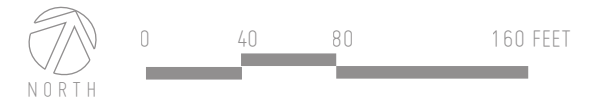
- ADD SHADE THROUGHOUT PARK, SEATING AREAS, MORE TREES
- SHADE OVER PLAYGROUND, CURRENTLY NO SHADE AT ALL
- MORE SEATING NEW PLAYGROUND
- DEDICATED DOG PARK, DOGS OFF LEASH NOW NOT SAFE. FENCED IN AREA DESIRED FOR LARGE DOGS
- SPLASH PAD OR COMMUNITY POOL FACILITY
- TENNIS ONLY COURTS, MIXED FEELINGS ON SCREENING
- PICKLE BALL DESIRED, BUT ALSO A LOT OF NO PICKLE BALL COMMENTS
- LOCK UP TENNIS COURTS AT NIGHT
- BETTER LIGHTING
- NO SAND, RUBBER SURFACE ONLY
- SWINGS, ZIP LINES, NETTED CLIMBERS, MONKEY BARS, LARGE PLAY STRUCTURE WITH ADA ACCESSIBLE ENTRY
- WORKING WATER FOUNTAIN WITH DOG BOWL
- FIX BROKEN CONCRETE THROUGHOUT PARK, IMPROVE SIDEWALK AT TENNIS COURT ENTRY, NOT ACCESSIBLE
- UPGRADE AND MORE PICNIC AREAS
- UMBRELLAS OR SHADE OVER SEATING
- NO E BIKE SIGNS
- BIKE PARKING
- MORE DEDICATED TENNIS COURT PARKING. POSSIBLE HEAD IN ALONG MACKENZIE. CURRENT RESIDENCES DO NOT FEEL SAFE BACKING OUT OF DRIVE WAY WITH SIGHT LIGHTS BLOCKED BY ON STREET PARKING
- PIT BIKE TRACK
- WATER FEATURE
- MORE DOG BAG STATIONS
- MORE COURTS IN ADDITION TO TENNIS, LIKE VOLLEYBALL OR PICKLE-BALL

TO SUMMARIZE THESE COMMENTS AND THE VERBAL COMMENTS WE RECEIVED:

- DOGS OFF LEASH SEEM TO BE A DIVISIVE SUBJECT AT THIS PARK. DEDICATED LARGE FENCED AREA TO ALLOW FOR THIS SAFELY. MANY STORIES OF ADULTS AND KIDS GETTING RUN OVER BY DOGS AND HURT
- SHADE OVER PLAYGROUND AND SEATING AREAS. MORE SEATING AREAS THROUGHOUT PARK
- MOST PEOPLE WANT TENNIS ONLY, SOME PEOPLE WANT PICKLE-BALL AND OTHER COURTS. SCREENING ALSO IS HALF LIKE-HALF DISLIKE
- IMPROVE LIGHTING, SOME ROWDY KIDS AND UN-HOUSED AT THIS PARK. POSSIBLE SECURITY CAMERA AT PLAYGROUND WOULD BENEFIT SAFETY CONCERNS.
- MORE TREES FOR SHADE. SOME NEIGHBORS WANT THE LARGE TREES REMOVED DUE TO LEAF LITTER ON THEIR HOUSE/PROPERTY.



CITY OF LAGUNA HILLS - MACKENZIE PARK
 Surrounding Uses and Connections

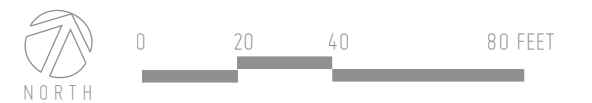


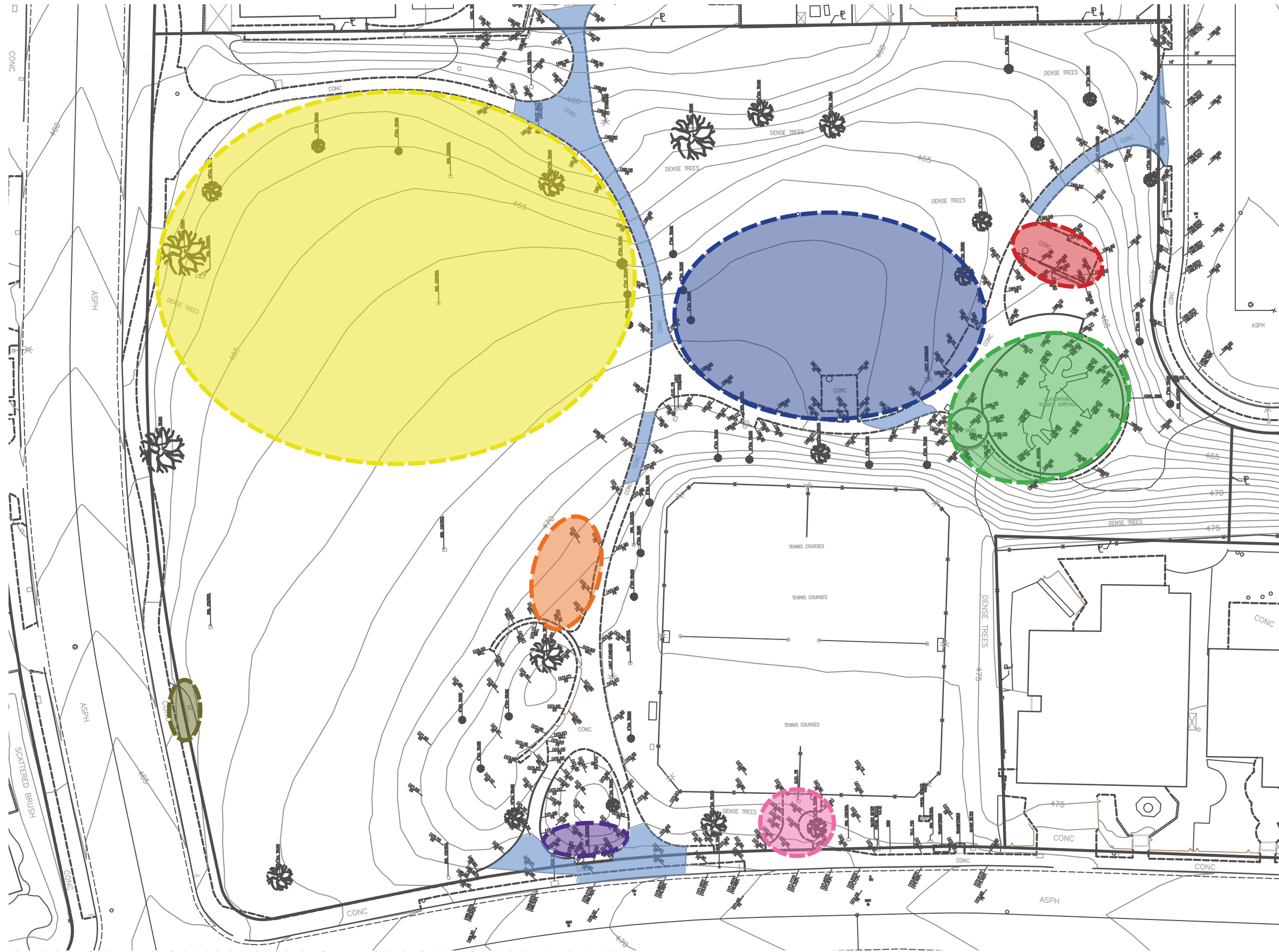


LEGEND

- EXISTING WALKWAY
- EXISTING PLAYGROUND AREA
- EXISTING TENNIS COURT AND FENCE
- EXISTING PARK MONUMENT SIGN
- EXISTING LIGHT POLE
- EXISTING PARK TABLE AND SEATING
- EXISTING PARK BENCH
- EXISTING DRINKING FOUNTAIN
- EXISTING PRIMARY UTILITIES
- EXISTING TREES

CITY OF LAGUNA HILLS - MACKENZIE PARK
Site Inventory Plan





LEGEND

-  EXISTING PLAYGROUND USE ZONE
-  POTENTIAL RELOCATED OR EXPANDED PLAYGROUND USE ZONE
-  EXISTING PARK PICNIC ZONE
-  POTENTIAL ADDITIONAL PARK PICNIC ZONE
-  POTENTIAL DEDICATED DOG PARK ZONE
-  EXISTING PARK MONUMENT ZONE
-  POTENTIAL NEW PARK MONUMENT ZONE
-  EXISTING TENNIS COURT ENTRY PAVING ADA COMPLIANCE RENOVATION
-  EXISTING PARK PATHWAY GRADING CONCERNS

CITY OF LAGUNA HILLS - MACKENZIE PARK
 Opportunities and Constraints

